



MANTA  
EXPEDITIONS

# MALDIVES

- BAA & RAA -

1 - 8  
September 2024  
(7 nights)

2,350 USD\*  
per person

## THE EXPEDITION

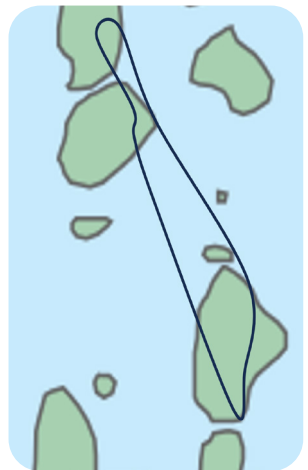
This expedition has been specifically timed to coincide with the most productive monsoon winds and lunar currents, which strongly influence the movements and feeding habits of reef manta rays. The aim of this trip is to use the knowledge of [Manta Trust](#) experts to find these feeding aggregations and allow the guests to experience the wonder of immersing yourself amongst a feeding frenzy of these gentle giants.

On this expedition we will visit three atolls and experience the wonderful marine diversity the Maldives has to offer!

[Baa Atoll](#) is off the main route for the majority of dive liveboard and we will venture into this more northern atoll specifically to seek out the feeding mantas of [Hanifaru Bay](#) and hopefully a few whale sharks as well. To see several of the world's largest fish feeding amongst dozens of the world's largest rays is something most people will never forget.

Just north of Baa we will venture into [Raa Atoll](#), a region regularly visited by mantas and hosting some stunning dive sites. Vertical walls covered in soft corals, gardens of anemones and mantas gliding above our heads are only a few of the marvels of this atoll.

While the weather in the Maldives at this time of the year is likely to be more changeable, these monsoonal conditions are [exactly what create the planktonic blooms](#) upon which the mantas and whale sharks aggregate to feed. Furthermore, we can never guarantee these natural events, but we have put together a trip, which maximises our chances of being in the right place at the right time, guided by the expertise of a Manta Trust scientist!





**MANTA**  
EXPEDITIONS

## MALDIVES



### ON-BOARD MANTA EXPERT

As on all Manta Expeditions, a Manta Trust scientist will be onboard for its entire duration, offering everyone the opportunity to interact and learn from a leading manta expert.



The presence of a Manta Trust scientist onboard will enhance your experience in a number of ways:

- motivate and inspire you, by learning about the marine ecosystems you will be exploring
- gain access to an accumulated wealth of knowledge and expertise, providing you the opportunity to become actively involved in cutting-edge scientific research.
- offer you an educational and much more rewarding experience by making your underwater encounters more personal, and by involving you first-hand in marine research and conservation.
- be environmentally aware and proactive and become an active member of an initiative which stands to have strong implications for the on-going persistence for manta rays worldwide.

Collectively the Manta Trust and Manta Expeditions teams possess over two decades of experience working in the Maldives, studying its manta population and marine life and have assembled a vast amount of knowledge and expertise, knowledge you will have access to on this expedition.

A core focus of the expeditions is not only to provide close encounters with manta rays but to enthuse and educate divers in marine conservation issues and the environment surrounding them. Through a series of activities and presentations on topics covering local marine species and habitats led by the Manta Trust expert, you are sure to leave with an increased awareness of the threats facing our oceans and, perhaps more importantly, how you can help.

Using the knowledge of the Manta Trust scientists you will gain a brand-new perspective to diving and experiencing the underwater world; by understanding what you see you will gain a better appreciation and love for the ocean and its creatures. Ultimately, with the guidance of the Manta Trust researcher you will have the chance to give something back to the ocean which we believe is fundamental considering how much we take from it!

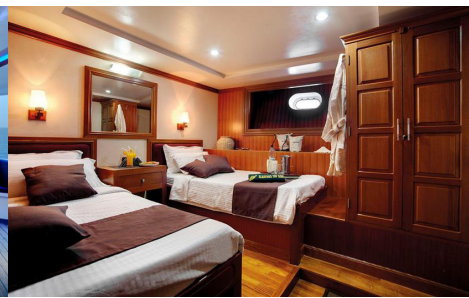
### CITIZEN SCIENCE - GET INVOLVED!

On this expedition, you'll have the opportunity to experience and participate in **cuttingedge conservation** research to protect one of the ocean's most majestic animals. Manta Trust scientists will be collecting photographic identification images of all mantas encountered throughout the expedition - a task that guests are welcome and encouraged to participate in. All new manta rays will be added to the database and guests will be invited to name these new mantas.

### THE MANTA TRUST

A UK registered charity, the Trust's mission is to advance the worldwide conservation of manta rays and their habitat through robust science and research, by raising awareness and providing education, influence and action. The Manta Trust was formed in 2011 to co-ordinate global research and conservation efforts for these amazing animals, their close relatives and their habitat.

**Data Collection:** The Manta Trust has a number of research projects worldwide, incorporating population data, research on manta movements, and genetic analyses - to name a few - in order to better understand the general ecology of manta and mobula rays.



### THE BOAT | M/Y DUKE OF YORK

Launched in 2010, the Duke of York motor yacht is a luxurious gateway to experience the magnificent waters of the Maldives. At 36m (118ft), she offers ample interior and exterior areas to relax and unwind. A total of 23 guests can be housed across eleven rooms spread over three decks, including a mixture of cabins with single and double beds. All en-suite rooms feature their own windows and air conditioning. On the main deck, the salon boasts comfortable lounge seating, ottomans and an entertainment center.

The exterior living space aboard the Duke of York is equally generous. The main aft deck is shaded and boasts teak dining tables and chairs, with wrap-around decks leading to a spacious foredeck, complete with a large oversized seating area / sunpad and cocktails table for socialising in the evenings. The top deck offers partial shade and ample further chaise lounges, also ideal for star gazing by night, for the romantics in the group.

The Duke of York is also accompanied by a comfortable 15m traditional Maldivian dhoni, fully equipped for scuba diving excursions and other activities, including canoeing and sunset fishing.

### BOOKING

To reserve your place on this Maldives Manta Expedition, please send an email to **Niv Froman** at [info@mantaexpeditions.com](mailto:info@mantaexpeditions.com)

Trip costs for this 7-nights expedition in full board accommodation and three dives / snorkelling excursions per day includes transfer Male airport/ vessel and return, drinking water, coffee and tea and GST tax. **Free NITROX** included!



\* Cost does not include international flight, Hanifaru park entry fee (USD 30), Green Tax (USD 42), Service Charge (USD 120), rental of dive gear, alcoholic beverages and crew tips to be paid onboard.